



# King County

Department of Local Services  
**Road Services Division**

*We're here for you.*





# King County Road Services Division



## Mission

Connecting communities with a safe and reliable road network for all.

## Vision

Deliver a road network that reflects the needs of all users, enhances the quality of our communities and environment, and supports a healthy economy. Create an environment where employees feel safe, experience a sense of belonging, and have equitable access to opportunities.

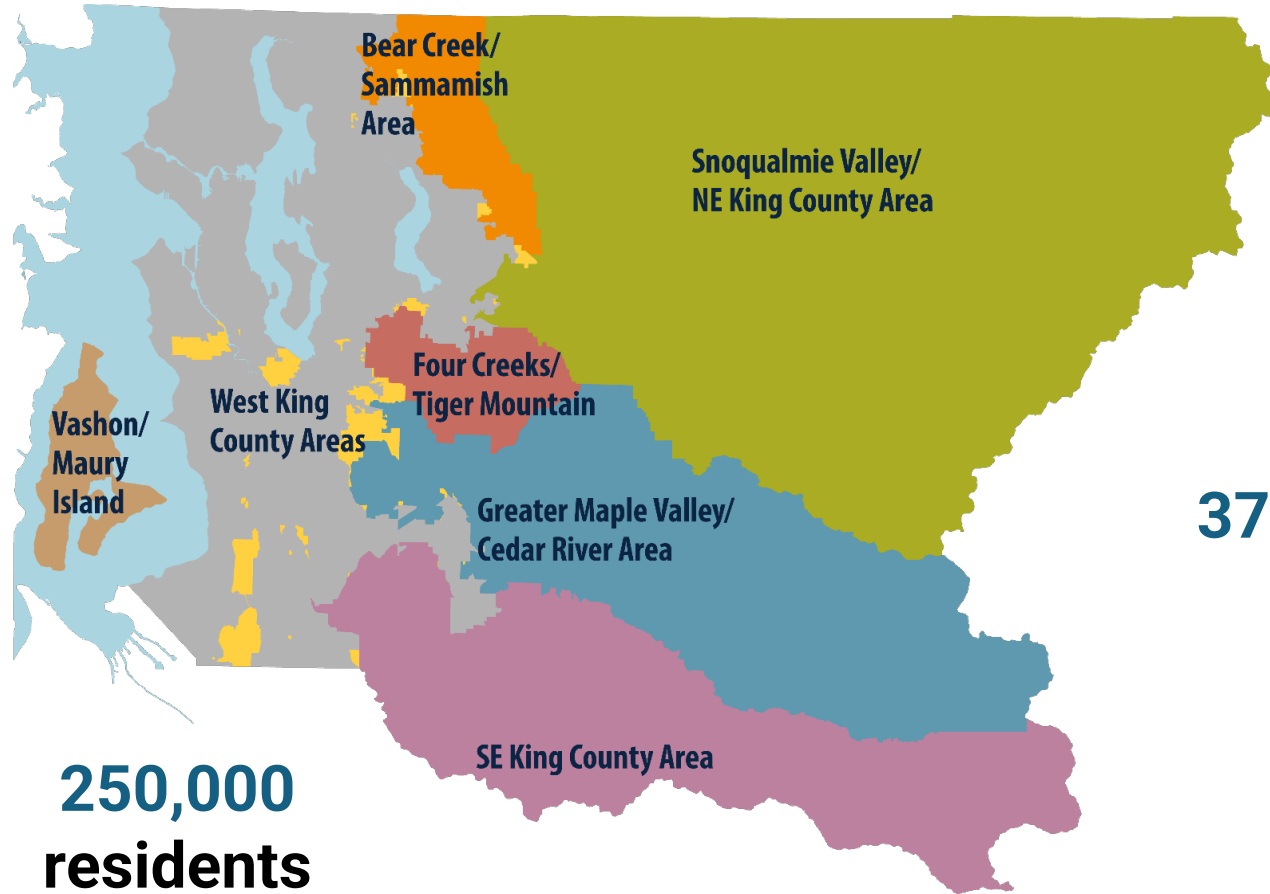


# Unincorporated King County is vast and diverse

**2nd largest**  
**"city" in the**  
**state**

**1,713**  
**square miles**

**250,000**  
**residents**



**7 community**  
**service areas**

**37+ languages**  
**spoken**

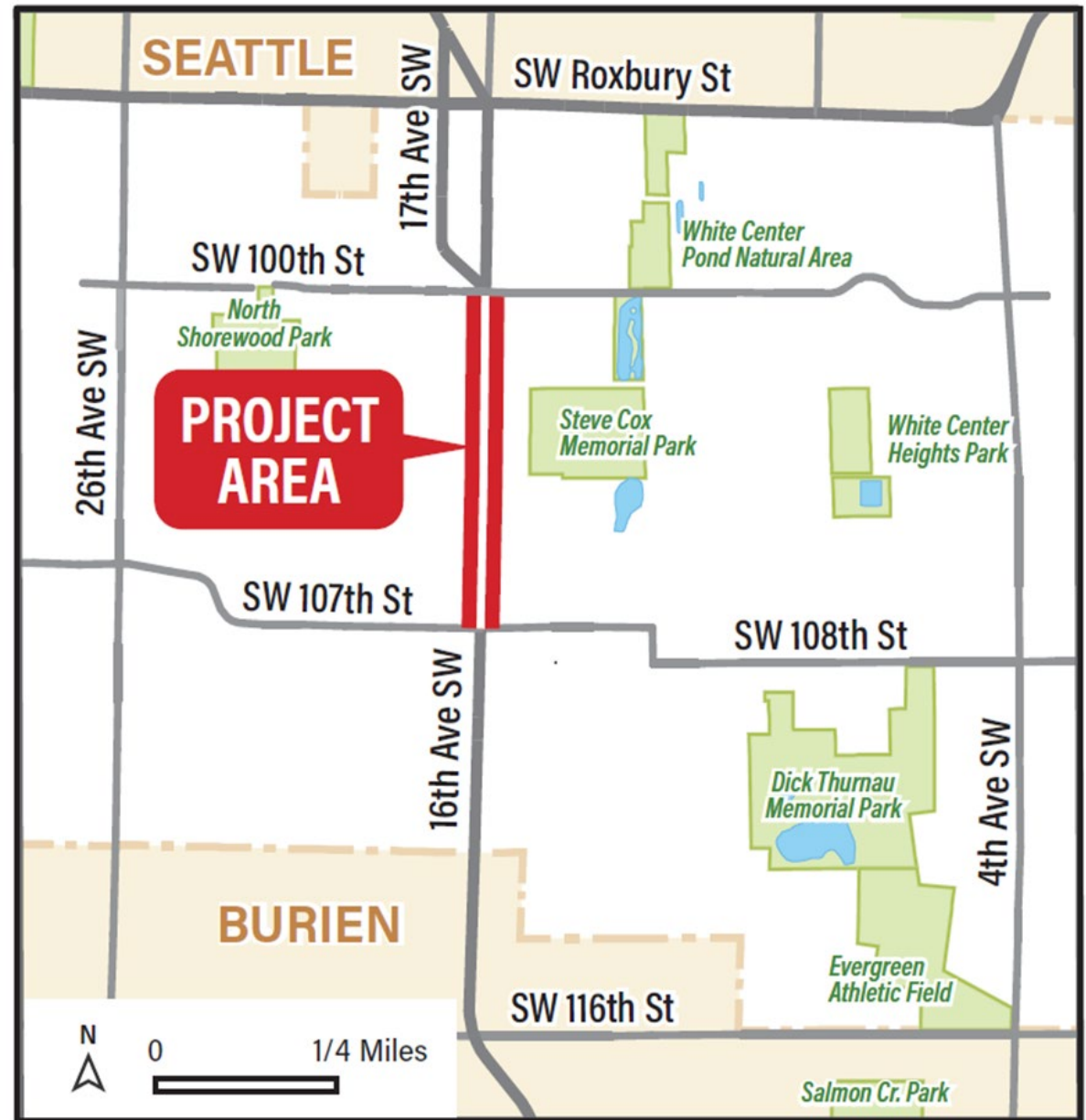


# 2026 Road Services Division Projects in White Center

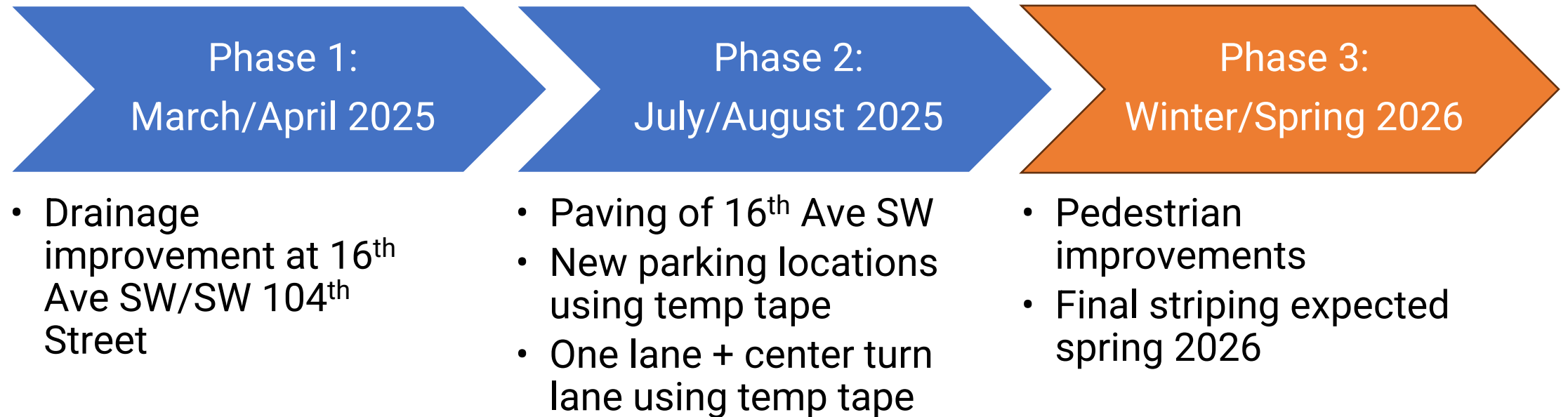


# 16th Avenue SW

SW 100th Street to  
SW 107th Street  
Pedestrian Safety  
Improvements &  
Traffic Calming Project



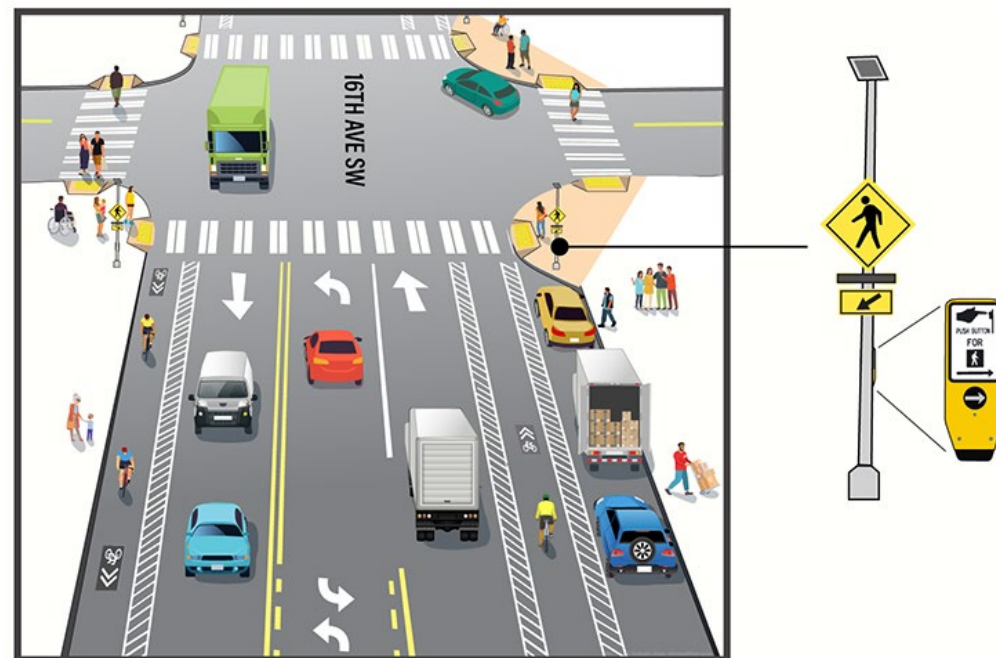
# 16th Avenue SW: SW 100th Street to SW 107th Street Pedestrian Safety Improvements & Traffic Calming Project



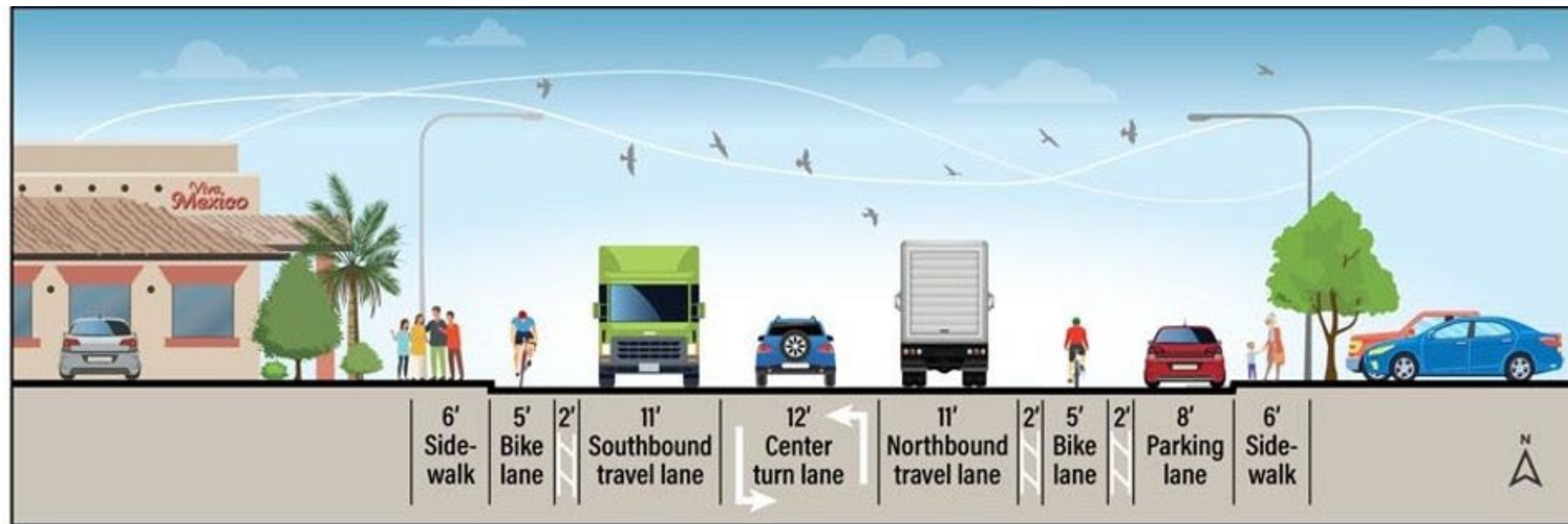


# What happens in Phase 3?

| Tactic   | How it helps   | Status   |
|--|--|--|
| One lane in each direction   | This helps prevent speeding by slowing down traffic and makes crossings safer for people walking.  | Done with temporary markings. Final markings are anticipated in spring 2026. |
| Center turn lane   | Provides a safer place for drivers to make left turns. This allows traffic to move freely in the main travel lane.   | Done with temporary markings. Final markings are anticipated in spring 2026. |
| Sidewalk curb extensions at SW 104th Street and SW 106th Street intersections                              | There are no traffic signals at these two intersections to stop traffic. Sidewalk curb extensions will help drivers see people walking in the crosswalk. The extensions also will shorten the distance people need to cross.   | Installation began in early 2026. Crews will move west to east.              |
| Rapid flashing lights and new pedestrian crossing signs at intersections that do not have a traffic signal | Flashing lights and high-visibility signs will alert drivers when pedestrians are crossing 16th Avenue SW at SW 104th and SW 106th Street.   | Anticipate installation will begin in spring 2026.                           |
| Bicycle lanes in both directions   | New, five-foot (5-foot) wide bicycle lanes will separate bike riders from motor vehicle traffic. This will give people on bikes or other active transportation more room so that they don't have to share the road with cars.  | Final markings are anticipated in spring 2026.                               |
| Two feet of extra space (buffer zone) on both sides of bike lane   | Cyclists feel more comfortable and secure when they are not too close to moving traffic or parked cars. A two-foot (2-foot) wide buffer zone on both sides of the bike lane could help encourage more people to choose biking or other types of active transportation to get to where they want to go. | Final markings are anticipated in spring 2026.                               |

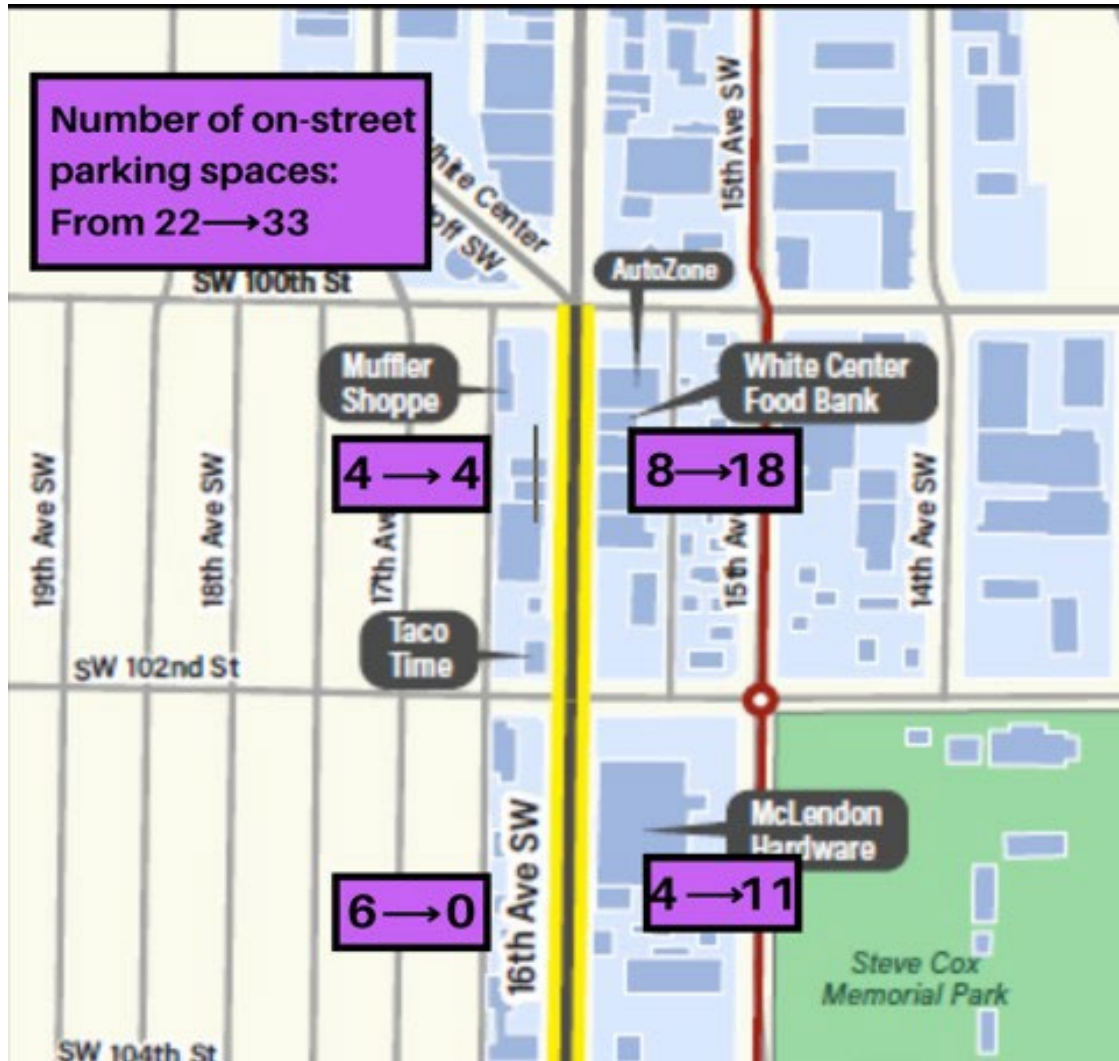


# 16th Ave SW with bike lanes and 46 parking spaces

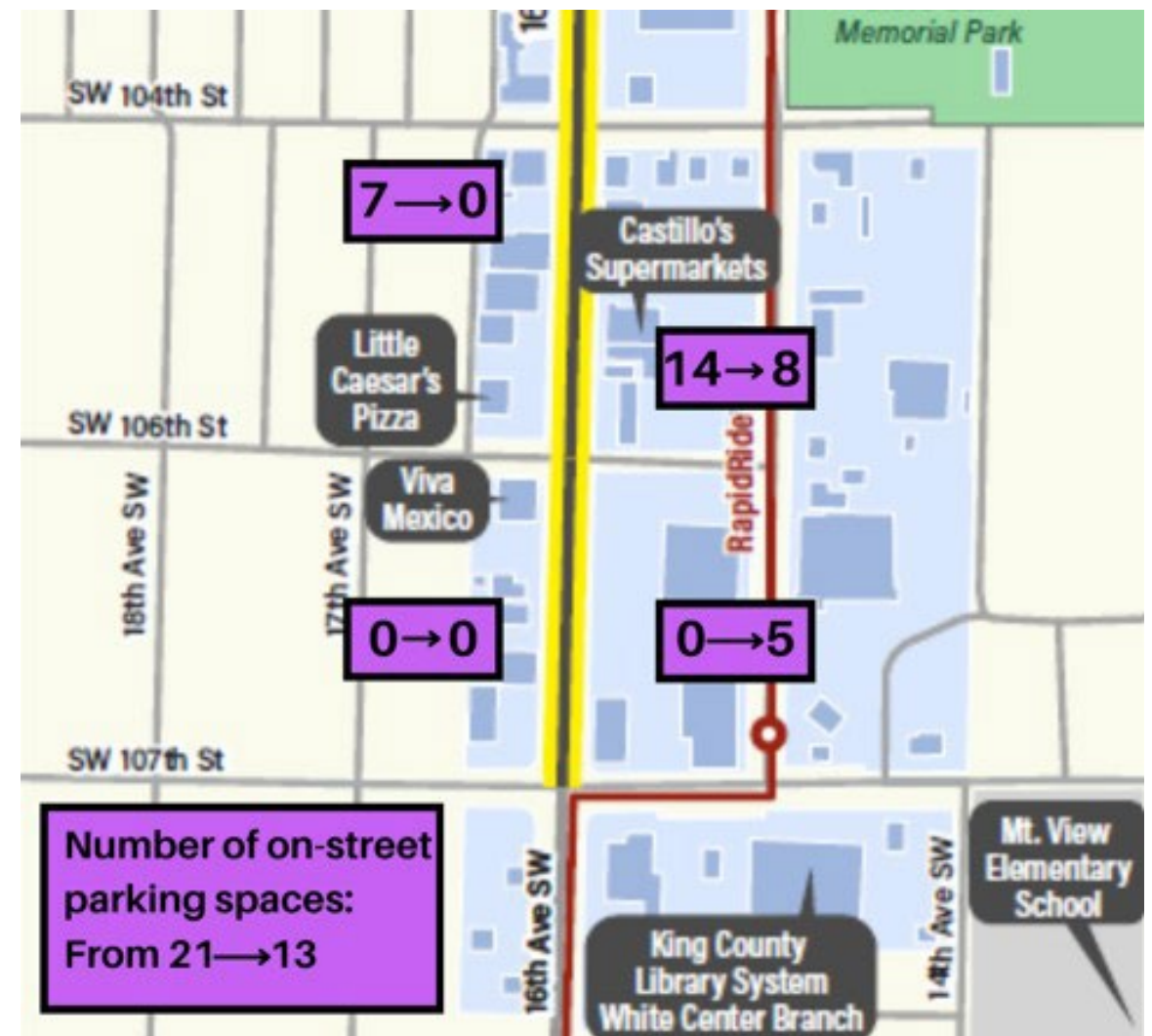




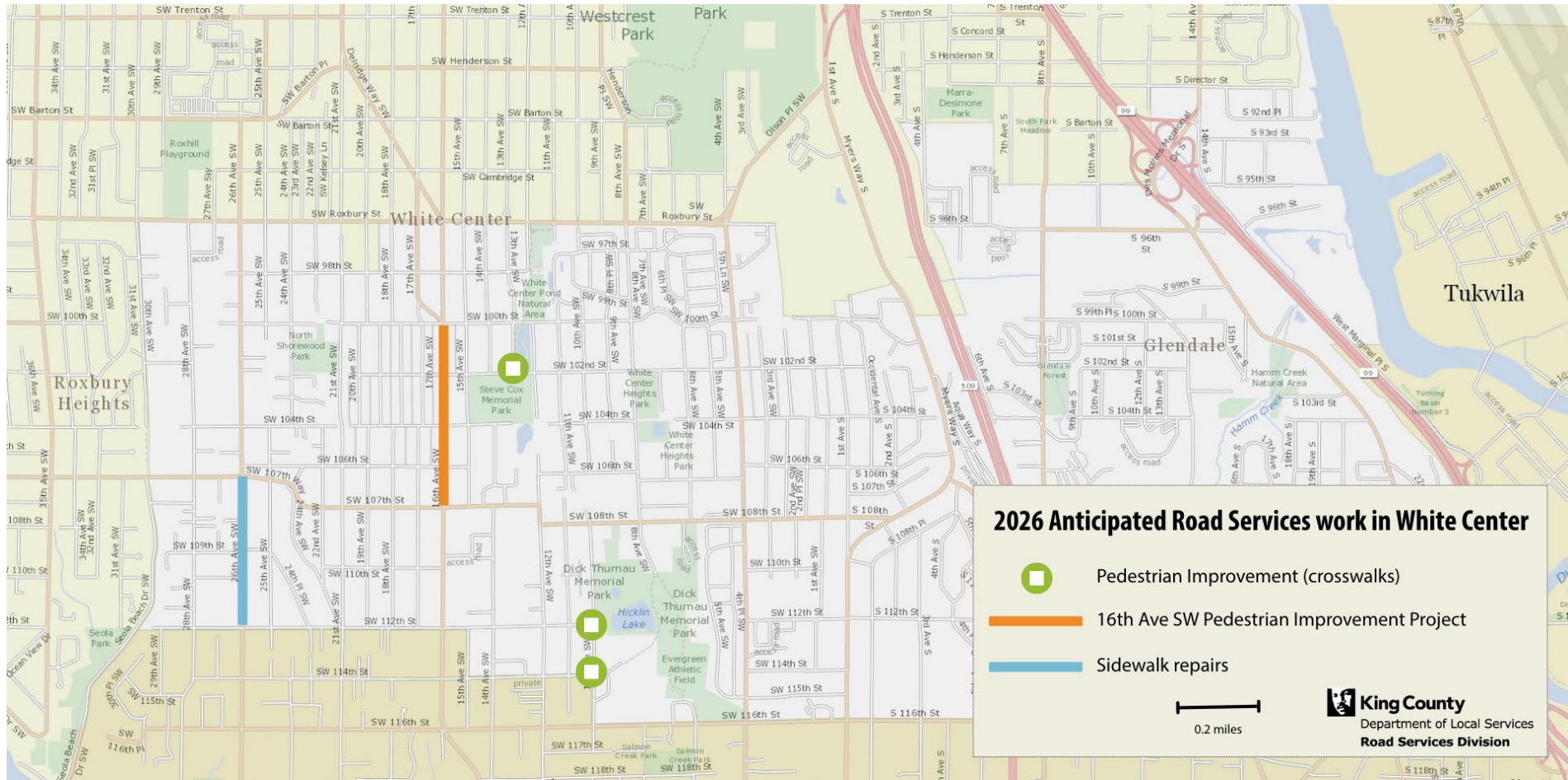
## SW 100th St to SW 104th St



## SW 104th St to SW 107th St



# 2026 White Center Projects



# Service Requests

24/7 Road Helpline 206-477-8100

[KingCounty.gov/roads](https://kingcounty.gov/roads)



**King County**

Department of Local Services

**Road Services Division**



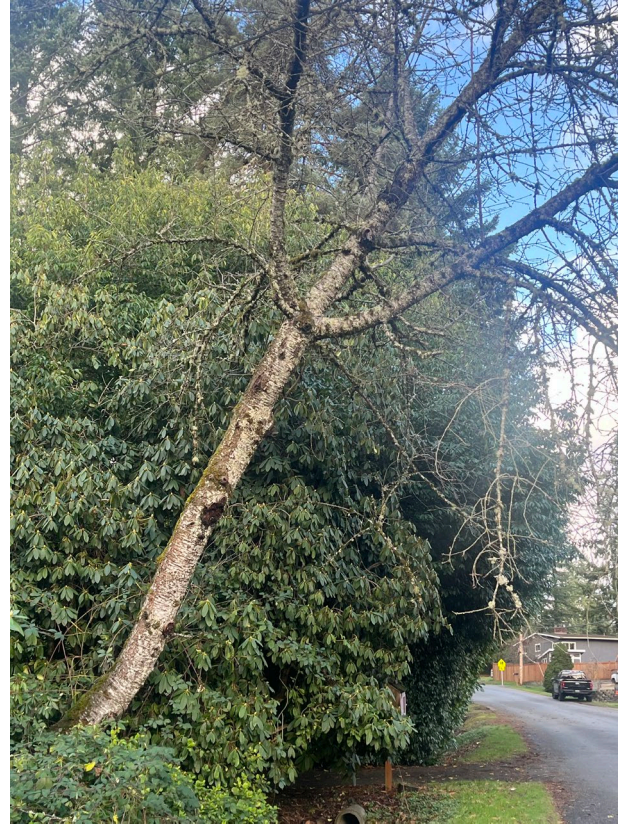
# Customer Service Request Process

## We're here for you

**Call our 24/7 Road Helpline  
at 206-477-8100.**

There's always someone answering this line, even on weekends, holidays, and evening hours!

**This line is ideal for urgent/emergent requests.**



*Tree leaning over the roadway*



*Sinkhole on the roadway*



# We're here for you

Email our Roads Maintenance email  
for non-urgent problems  
[maint.roads@kingcounty.gov](mailto:maint.roads@kingcounty.gov).

This inbox is checked Monday through Friday,  
between 7 am and 3:30 pm.

## Illegal dumping concerns:

Submit a complaint at  
[KingCounty.gov/illegal-dumping](https://kingcounty.gov/illegal-dumping)



*Illegal dumping*



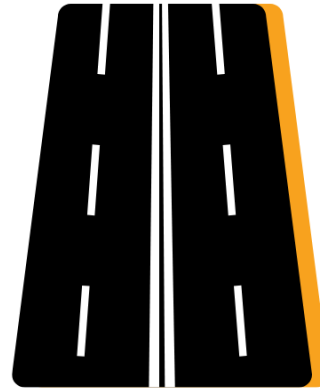
*Roadway drainage*



# When you contact us ...



Contact information



Side of the road (Ex: ditch near the westbound lane)

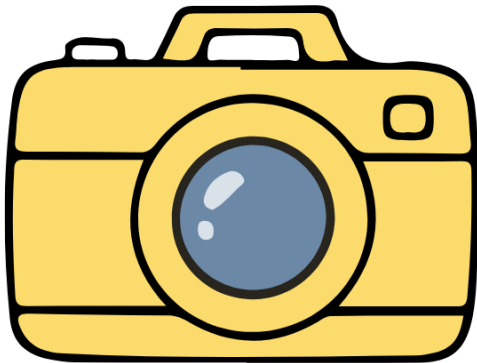


Photo or video



Exact location (Ex: address, cross streets)



# Service Requests

## YOU help us keep our roads safe and maintained

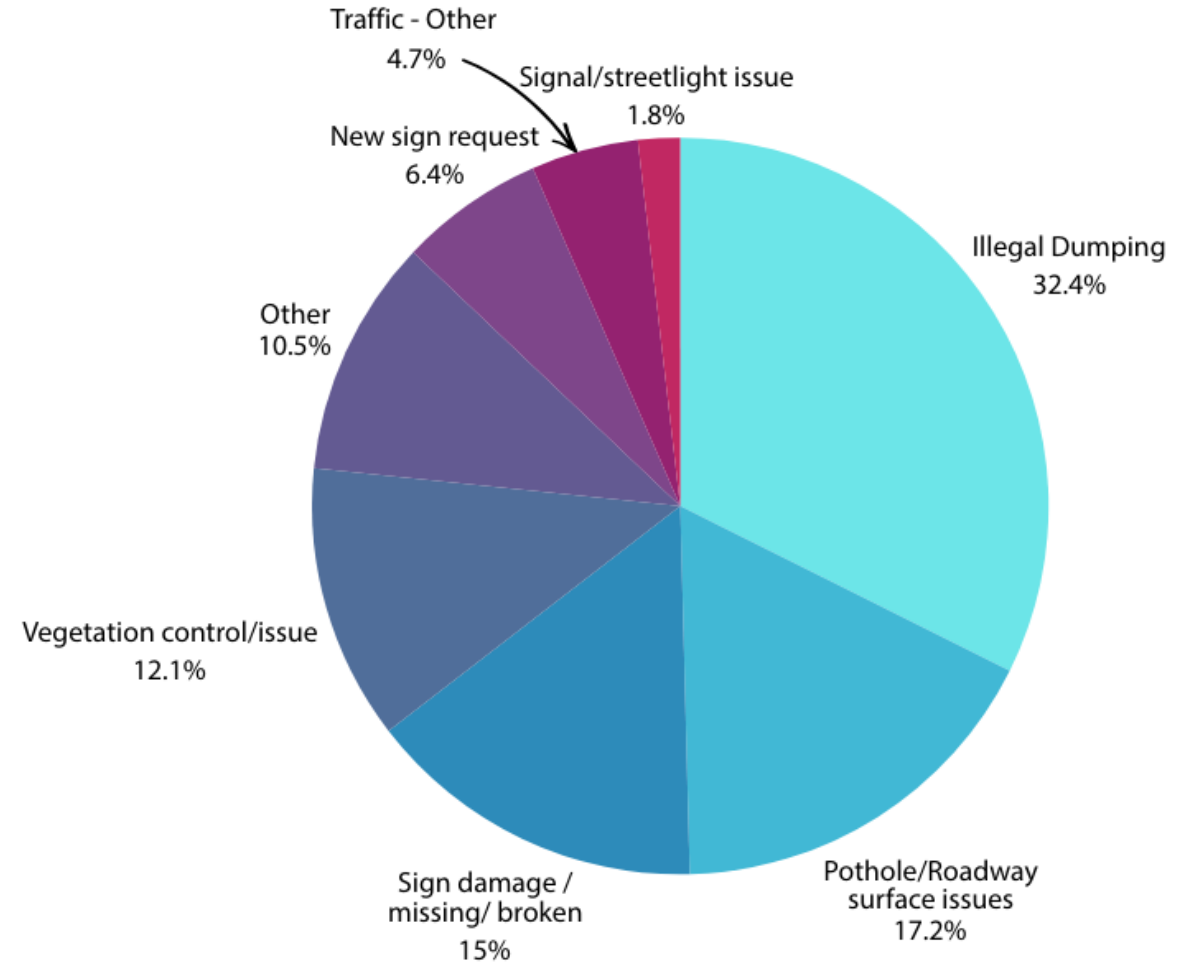


# 2025 - Service Requests Created

Data for north Highline Unincorporated Community, 98146

## By the numbers

- Service requests in zip code 98146 that were created and closed in 2025
- The total number of closed requests in the North Highline community in 2025 was 488.
- If a request is still open, it is not represented here



# Contact Us!

24/7 Road Helpline 206-477-8100

[KingCounty.gov/roads](https://www.kingcounty.gov/roads)



**King County**

Department of Local Services

**Road Services Division**



# Stay connected with us!

## Visit [kingcounty.gov/roads](http://kingcounty.gov/roads)

- View **project websites**, get **winter weather information**.
- Sign up for **Road Alerts** to receive email or SMS text notifications about work in your community. [KingCounty.gov/RoadAlert](http://KingCounty.gov/RoadAlert)
- **MyCommute Map** See current and upcoming road closures and lane restrictions. [KingCounty.gov/MyCommute](http://KingCounty.gov/MyCommute)

## More ways

- **24/7 Road Helpline** Call **206-477-8100** or [maint.roads@kingcounty.gov](mailto:maint.roads@kingcounty.gov) to report problems on the road.
- **Social media** @KingCountyLocalServices



# QR Codes

**kingcounty.gov/roads**



**UA News**



**King County Local Blog**



**Instagram**



**Facebook**



**MyCommute**



**Traffic  
Cameras**



**Road Alerts**



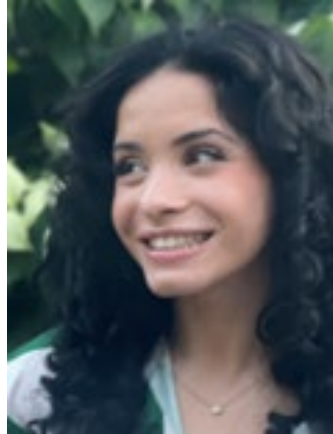
# Contact us



**Christina Lorella**

206-205-8582

[clorella@kingcounty.gov](mailto:clorella@kingcounty.gov)



**Lilli DeLeon**

206-477-2862

[lidleon@kingcounty.gov](mailto:lidleon@kingcounty.gov)



**Amy Bresslour**

206-477-9223

[abresslour@kingcounty.gov](mailto:abresslour@kingcounty.gov)



# Title VI Survey



<https://forms.office.com/g/D0Kse9B78X>





# Questions & Answers

