

Highline Community Health Information

Help Prioritize Community Health Needs for Highline Medical Center

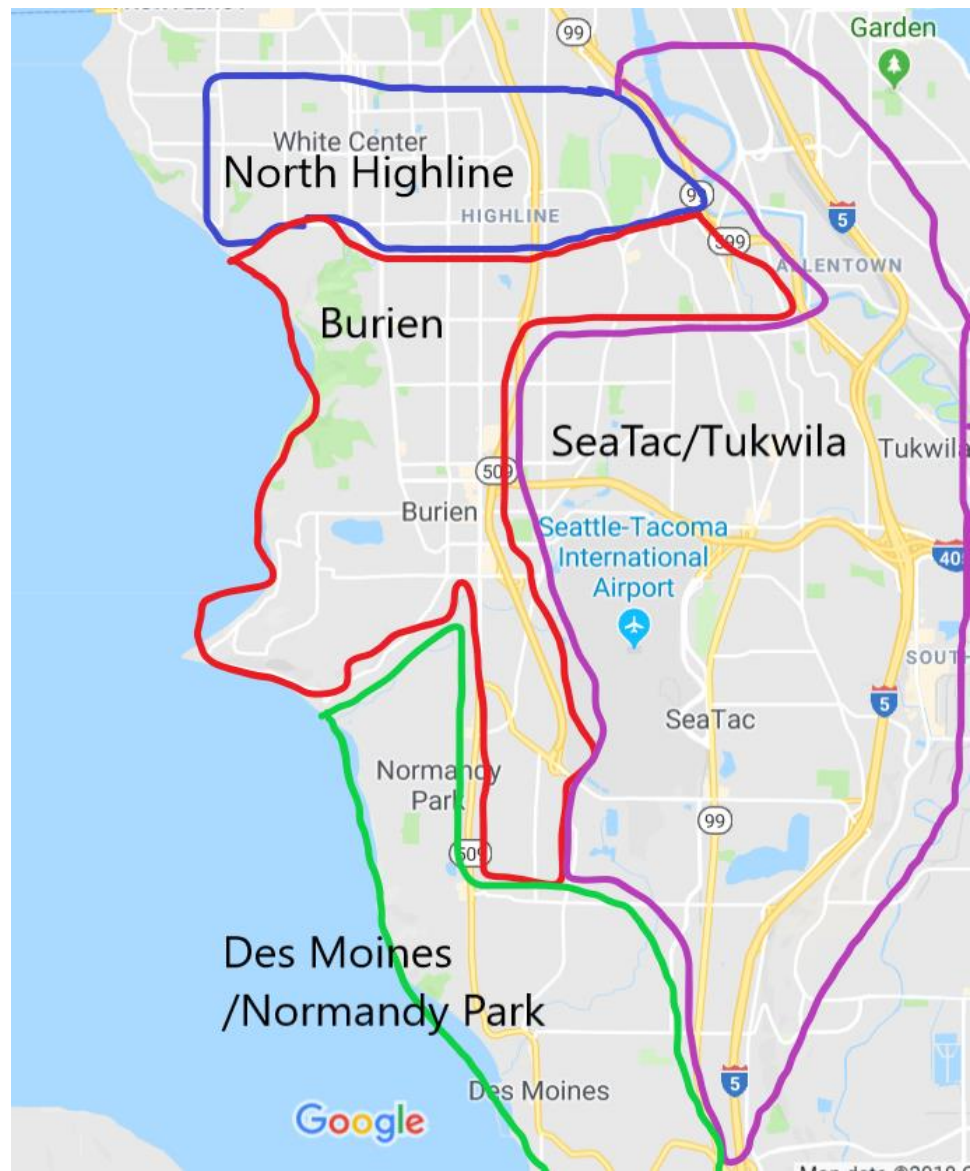


Community Health Needs Assessments

- Hospitals are required to gain data and input on community health needs every 3 years
- Data comes from King County Public Health
- Your input will be used to help Highline Medical Center prioritize community health needs.
- Health data can be found at www.kingcounty.gov/chi

Highline Data

- 4 distinct areas around Highline Medical Center
 - North Highline
 - Burien
 - SeaTac/Tukwila
 - Des Moines/Normandy Park



Social Determinants of Health

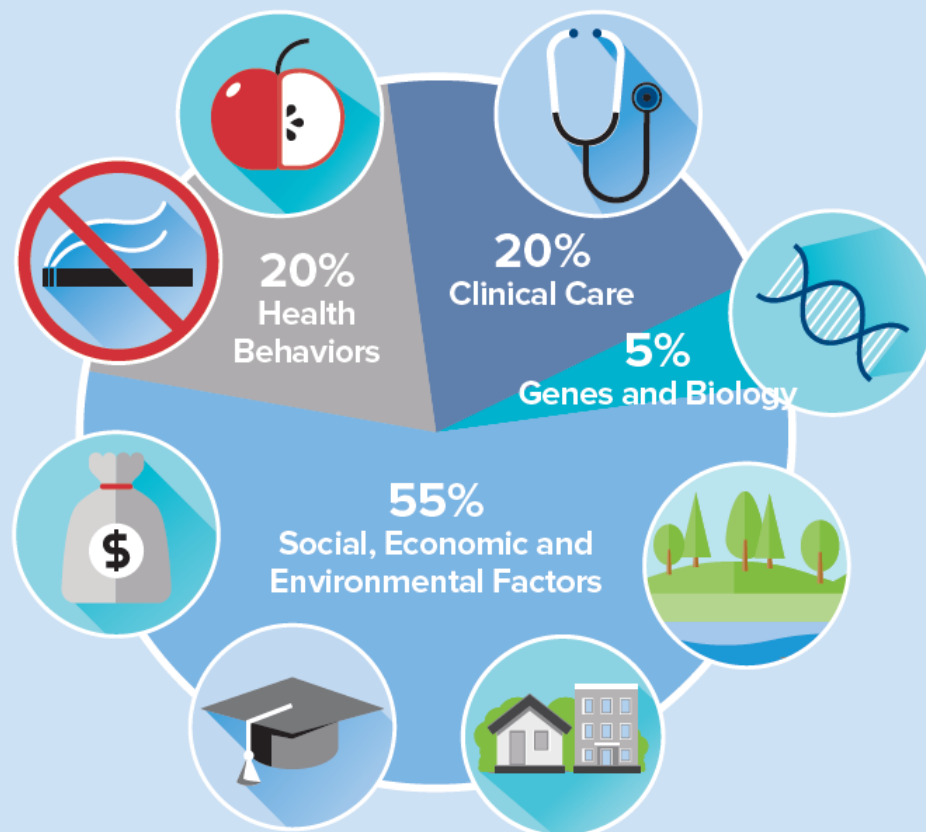
- A lot of your overall health is determined by factors other than behavior

Health Equity

- Income, neighborhood, race/ethnicity, and education level.
- All 4 Highline areas have lower overall life expectancies than King County.
- Your zip code shouldn't determine your health.

Health Starts Where We Live, Learn, Work and Play.

What makes us healthy?



Health Areas

- Access to Care
- Obesity, Nutrition & Physical Activity
- Substance Use
- Mental Health
- Maternal/Child Health
- Violence and Injury Prevention



Access to Care

Insurance

- 8% of adults in King County are uninsured
 - 9% in SeaTac
 - 13% in Des Moines/Normandy Park
 - 16% in Burien
 - *No data for North Highline*
- Hispanic adults were uninsured at 3 times the county average
- In 2010, 17% of King County adults were uninsured

Access to Care

Unmet Medical Needs due to Cost

- 12% in King County
- 30% in North Highline* (highest in county)
- 23% in Burien*
- 22% in SeaTac/Tukwila*
- 14% in Des Moines/Normandy Park
- Black and Hispanic residents had highest rates of unmet medical needs due to cost

Obesity, Nutrition and Physical Activity

Obese Adults

- 22% in King County
- 43% in North Highline* (highest in county)
- 31% in Burien*
- 27% in SeaTac/Tukwila
- 24% in Des Moines/Normandy Park

Youth Obesity

- 9% in King County
- 13% in South King County

Obesity, Nutrition and Physical Activity

Insufficient physical activity

- Adults who don't meet physical activity guidelines (combination of aerobic and strength)
 - 77% in King County
 - 94% in North Highline* (highest in county)
 - 88% in Burien*
 - 81% in SeaTac/Tukwila
 - 72% in Des Moines/Normandy Park
- 79% of youth in South King County didn't participate in physical activity for 60+ minutes in the last week. Same as county average

Substance Use

Drug-Related Deaths

- Dramatic increase in heroin and meth-related deaths from 2010-2016
- Drug-Induced Deaths
 - King County – 13 per 100k residents
 - 18.7 in North Highline
 - 14.2 in Burien
 - 12.7 in SeaTac/Tukwila
 - 18.9 in DM/NP

Tobacco Use

- Adult Smoking
 - 13% in King County
 - 23% in North Highline
 - 20% in Burien*
 - 23% in SeaTac/Tukwila*
 - 18% in DM/NP
- South King County is only region where smoking has not declined since 2006
- High rates of Native American youth who smoke

Mental Health

Adults in Frequent Mental Distress

- 10% in King County
- 19% in North Highline* (highest in county)
- 15% in Burien
- 9% in SeaTac/Tukwila
- 11% in Des Moines/Normandy Park

Youth Depression

- Percent of youth who reported feeling sad or hopeless for 2 or more consecutive weeks.
 - 30% in King County
 - 33% in South King County*
- Hispanic, Pacific Islander, American Indian, and multiple race youth are more likely than Asian, Black or White youth to experience depressive feelings

Maternal & Child Health

Early and Adequate Prenatal Care

- Seek care by the end of the 4th month and attend 80% of recommended doctor visits.
 - 71.3% in King County
 - 69.5% in North Highline
 - 71.5% in Burien
 - 63.2% in SeaTac/Tukwila*
 - 69.2% in Des Moines/Normandy Park
- Severely low percentages for Black and Pacific Islander populations

Violence & Injury Prevention

Hospitalizations for Unintentional Injuries

- 514 per 100K in King County
- 551.1 in South King County*

Homicides

- 2.7 per 100K in King County
- 6.4 in North Highline
- 5.4 in Burien
- 4.8 in SeaTac/Tukwila
- 3.2 in Des Moines/Normandy Park
- The homicide rate for Black residents in King County is 5x the county average

Violence & Injury Prevention

Suicide Deaths

- 12.2 per 100K in King County
- 12.7 in North Highline
- 11.7 in Burien
- 9.4 in SeaTac/Tukwila
- 14.3 in Des Moines/Normandy Park
- The suicide rate for in King County was highest for White and Native Americans

Highline Medical Center cannot address every concerning health factor. Use your three dots to help us prioritize.

- Add a dot to whatever indicator you think Highline should focus
- Add a note to give us ideas on how to address an indicator